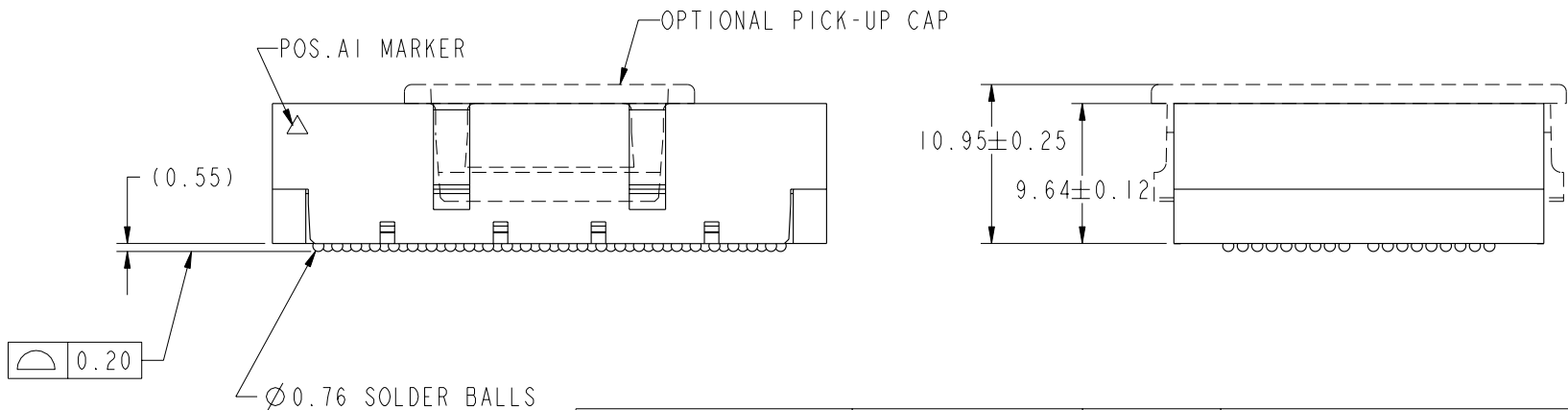
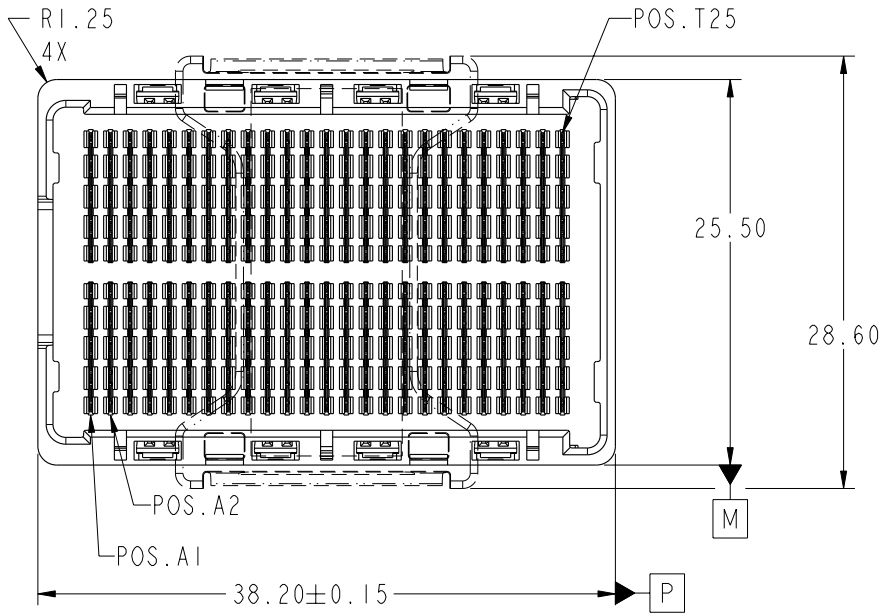




This document is the property of and embodies CONFIDENTIAL and PROPRIETARY information of FCI. No part of the information shown on this document may be used in any way or disclosed to others without the written consent of FCI. Copyright FCI.

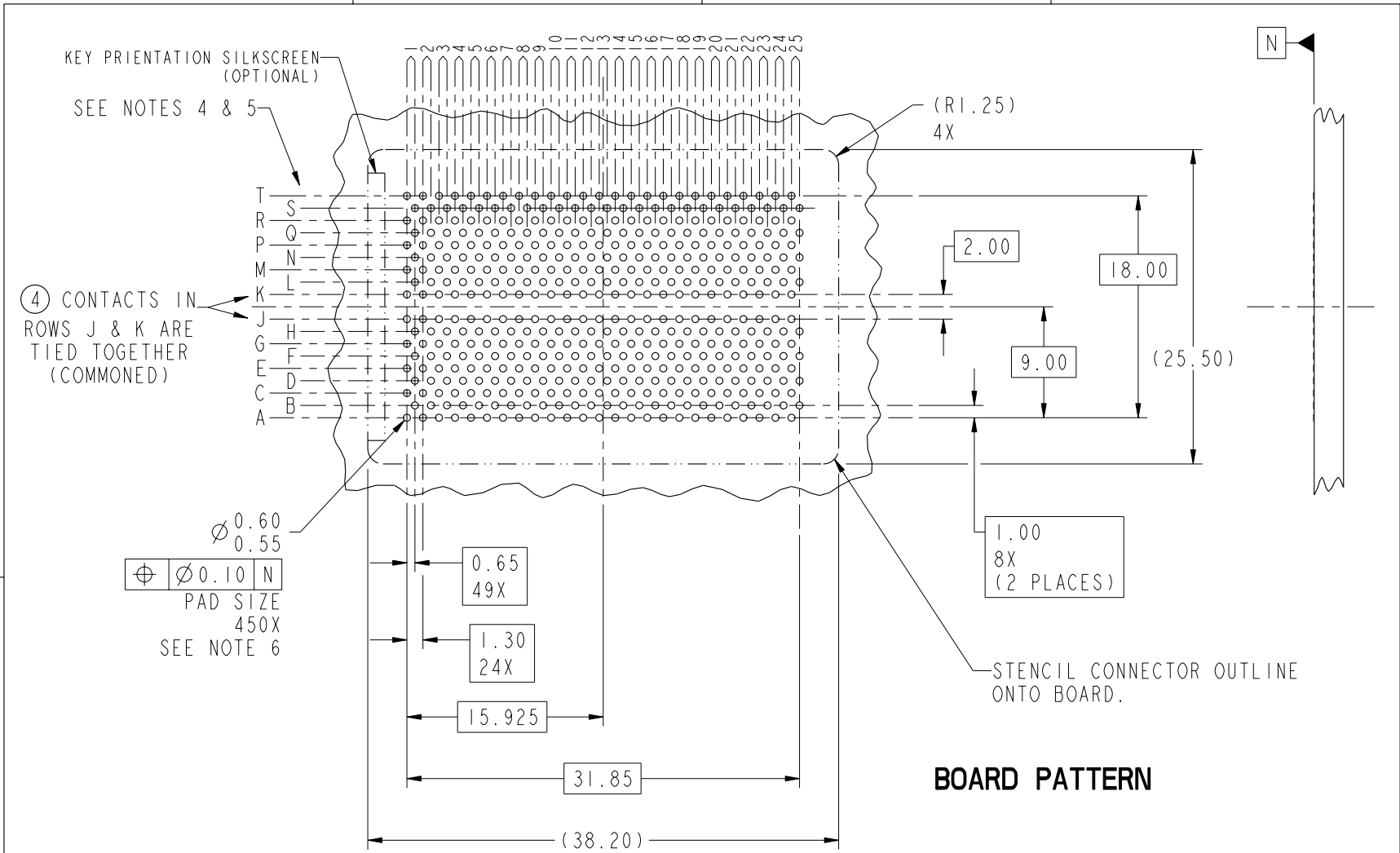


Ø0.76 SOLDER BALLS
 450X
 SEE NOTE 2

⊕ Ø0.30 P M

mat'l code				SEE NOTE 1		tolerances unless otherwise specified		CUSTOMER		FCI www.fciconnect.com	
ltr	ecn no.	dr	date	linear	0.X ±0.3		COPY		title GIG-Array 10mm PLUG ASSY. 200 SIG. POS.		
A	V06-0001	DAI	01/10/06		0.XX ±0.10		projection				
B	V06-0109	LP	2006/04/21		0.XXX ±0.050						
C	V06-0558	LP	2006/06/12	angles	0° ±2°				product family GIG-Array code 213		
				dr	R. JOHNSON	1/8/02	MM		size		sheet
				enr	D. JOHNESCU	1/8/02	← MM →		dwg no		1 of 4
				chr	D. JOHNESCU	1/8/02	scale		A		55737
				appd	D. JOHNESCU	1/8/02	1:1		cage code 22526		
sheet index	revision sheet	C 1	C 2	C 3	C 4						

This document is the property of and embodies
 CONFIDENTIAL and PROPRIETARY information of FCI.
 No part of the information shown on this
 document may be used in any way or disclosed
 to others without the written consent of FCI.
 Copyright FCI.



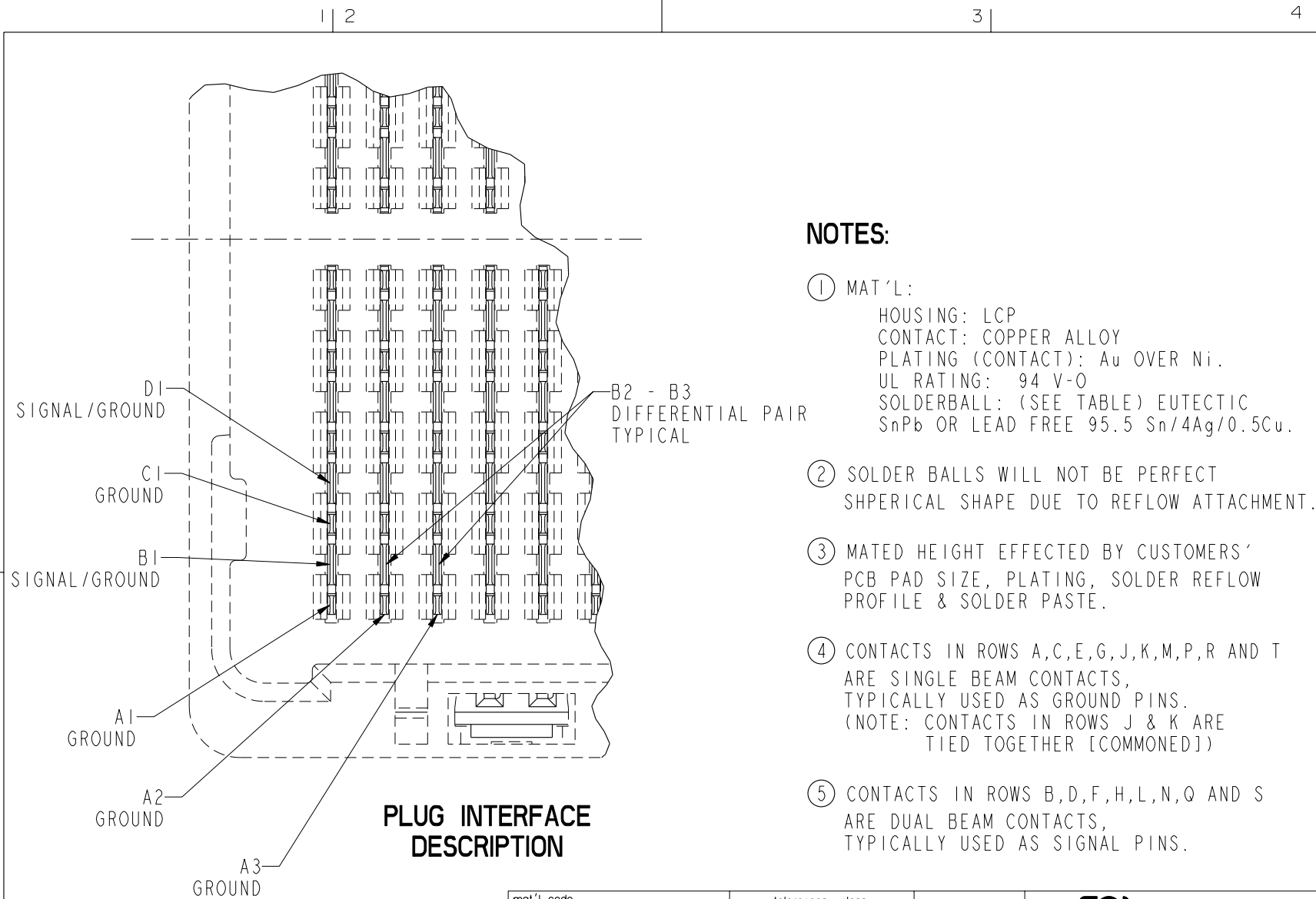
$\varnothing 0.60$
 $\varnothing 0.55$
 $\varnothing 0.10$ N
 PAD SIZE
 450X
 SEE NOTE 6

BOARD PATTERN

mat'l code				SEE NOTE 1		tolerances unless otherwise specified		CUSTOMER		www.fciconnect.com	
ltr	ecr no.	dr	date	linear	0.X ±0.3		COPY			title	
C	-	-	-		0.XX ±0.10		MM			GIG-Array	
					0.XXX ±0.050		←			10mm PLUG ASSY. 200 SIG. POS.	
				angles	0° ±2°		scale		product family		
				dr	R. JOHNSON	1/8/02	2:1		GIG-Array		
				enr	D. JOHNESCU	1/8/02			code		
				chr	D. JOHNESCU	1/8/02			size		
				appd	D. JOHNESCU	1/8/02			dwg no		
sheet index		revision sheet						A		55737	
										sheet 2	
										2	



This document is the property of and embodies
 CONFIDENTIAL and PROPRIETARY information of FCI.
 No part of the information shown on this
 document may be used in any way or disclosed
 to others without the written consent of FCI.
 Copyright FCI.



**PLUG INTERFACE
DESCRIPTION**

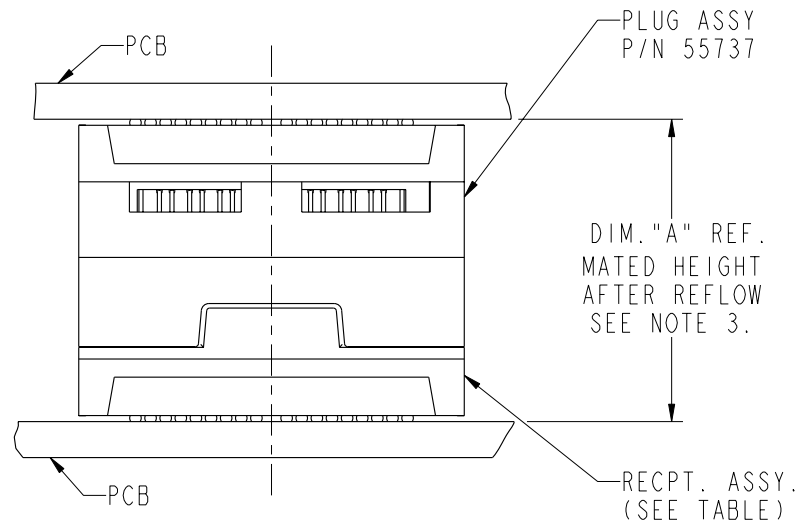
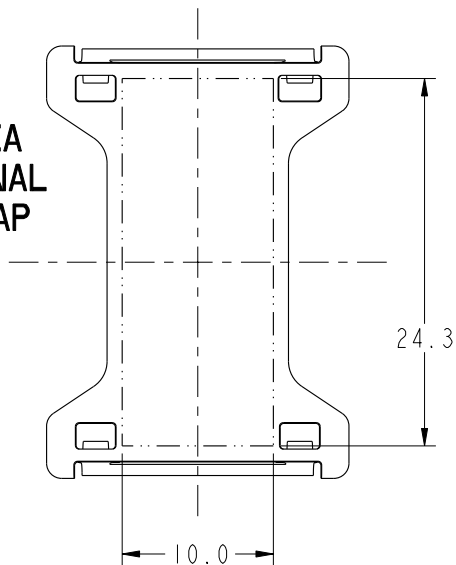
NOTES:

- ① MAT'L:
 HOUSING: LCP
 CONTACT: COPPER ALLOY
 PLATING (CONTACT): Au OVER Ni.
 UL RATING: 94 V-0
 SOLDERBALL: (SEE TABLE) EUTECTIC
 SnPb OR LEAD FREE 95.5 Sn/4Ag/0.5Cu.
- ② SOLDER BALLS WILL NOT BE PERFECT SPHERICAL SHAPE DUE TO REFLOW ATTACHMENT.
- ③ MATED HEIGHT EFFECTED BY CUSTOMERS' PCB PAD SIZE, PLATING, SOLDER REFLOW PROFILE & SOLDER PASTE.
- ④ CONTACTS IN ROWS A,C,E,G,J,K,M,P,R AND T ARE SINGLE BEAM CONTACTS, TYPICALLY USED AS GROUND PINS. (NOTE: CONTACTS IN ROWS J & K ARE TIED TOGETHER [COMMONED])
- ⑤ CONTACTS IN ROWS B,D,F,H,L,N,Q AND S ARE DUAL BEAM CONTACTS, TYPICALLY USED AS SIGNAL PINS.

mat'l code		SEE NOTE 1		tolerances unless otherwise specified		CUSTOMER		www.fciconnect.com	
ltr	ecr no.	dr	date	linear	0.X ±0.3	COPY		title	
C	-	-	-	projection	0.XX ±0.10			GIG-Array	
				angles	0.XXX ±0.050			10mm PLUG ASSY. 200 SIG. POS.	
				dr	0° ±2°	scale		product family	
				enr	R. JOHNSON 1/8/02	7:1		GIG-Array	
				chr	D. JOHNESCU 1/8/02			code	
				appd	D. JOHNESCU 1/8/02			size	
sheet	revision							dwg no	
index	sheet							55737	
								sheet	
								3	

PRODUCT NUMBER	SOLDER BALL
55737-001	SnPb
55737-001LF	SnAgCu LEADFREE SEE NOTES 7 & 8

FLAT AREA
FOR OPTIONAL
PICK-UP CAP



END VIEW OF MATED CONNECTORS

DIM. "A"	RECPT. ASSY. P/N
15	55740
20	10026010
25	55741

6. SPECIFIED POSITIONAL TOLERANCE DEFINES PAD TO PAD LOCATION WITHIN LAND PATTERN. POSITIONAL TOLERANCE OF LAND PATTERN TO FUDICIAL MARKS OR PCB DATUMS SHALL BE DEFINED BY CUSTOMER. FOR RECOMMENDED PRODUCT APPLICATION AND PCB DESIGN DETAILS, SEE DOC. NO. GS-20-016.
7. FOR PROPER APPLICATION FOLLOW FCI APPLICATION SPECIFICATION GS-20-033. LEAD FREE SOLDER BALLS WILL NOT SOLDER PROPERLY IN A LEADED SOLDER PROCESS DUE TO A HIGHER REFLOW TEMPERATURE. LEADFREE PRODUCT IS THEREFORE NOT BACKWARDS COMPATIBLE WITH LEADED OR SOME SOLDERING APPLICATIONS. REFERENCE FCI APPLICATION SPECIFICATION.
8. THIS PRODUCT MEETS THE EUROPEAN UNION DIRECTIVES AND OTHER COUNTRY REGULATIONS AS DESCRIBED IN GS-22-008. PRODUCT MEETING THIS DIRECTIVE IS IDENTIFIED IN THE CODE NUMBER MARKED ON EACH PART BY HAVING AN "X" IN THE SEVENTH CHARACTER POSITION.

mat'l code				SEE NOTE 1		tolerances unless otherwise specified		CUSTOMER		FCI www.fciconnect.com	
ltr	ecr no.	dr	date	linear	0.X ±0.3		COPY		projection	title	
C	-	-	-		0.XX ±0.10		MM			GIG-Array	
				angles	0.XXX ±0.050		MM		10mm PLUG ASSY. 200 SIG. POS.		
					0° ±2°		scale		product family		
				dr	R. JOHNSON	1/8/02	1:1		GIG-Array		code
				enr	D. JOHNESCU	1/8/02			size		213
				chr	D. JOHNESCU	1/8/02			dwg no		sheet
				appd	D. JOHNESCU	1/8/02			A		4
sheet index	revision sheet										



This document is the property of and embodies CONFIDENTIAL and PROPRIETARY information of FCI. No part of the information shown on this document may be used in any way or disclosed to others without the written consent of FCI. Copyright FCI.